

TO PLACE AN ORDER CALL: 866-487-4751

ATRx ProxTime™ Example Configurations

With the ability to connect up to **eight proximity terminals** and both **Single-PC and Network Editions** available, ATRx ProxTime systems offer excellent flexibility and ease-of-use. Set up terminals where ever they will be convenient for your employees to use, and administer the system from a single stand-alone PC or networked server.

Attendance Rx Single-PC Edition:



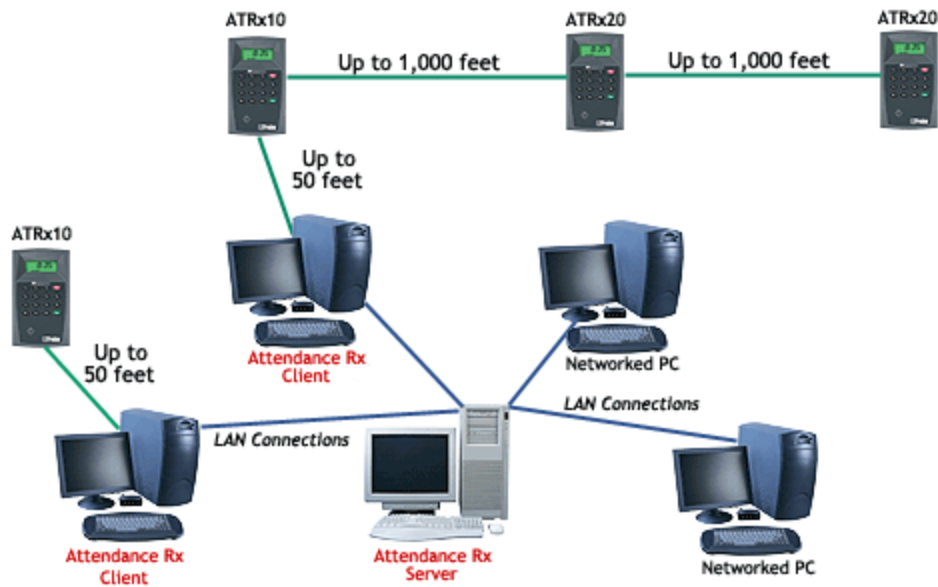
Single, One-to-One:

Stand-alone PC running Attendance Rx Single-PC edition. One ATRx10 terminal, up to 50 feet away from PC. An economical solution ideal for smaller locations with a single entrance/exit.

Single, One-to-Many:

Stand-alone PC running Attendance Rx Single-PC edition. One ATRx10 terminal connected to PC, up to 50 feet away, with up to seven ATRx20 terminals connected in a chain following the initial ATRx10 primary terminal. Each ATRx20 terminal may be up to 1,000 feet from the terminal preceding it in the chain. Excellent for locations with up to 50 employees using multiple entrances/exits.

Attendance Rx Network:



Networked:

Server running Attendance Rx Network Server. System may include one or more networked PCs each running Attendance Rx Network Client. Each client PC may have one ATRx10 primary terminal connected, up to 50 feet away from the PC. Additional ATRx20 secondary terminals may be chained to initial ATRx10 primary terminals. Up to eight terminals in total may be connected to the system. Suitable for larger facilities with up to 100 employees using multiple entrances/exits.

General Notes:

- Up to eight terminals – including at least one ATRx10 primary terminal – may be used. Each ProxTime system comes with one ATRx10 primary terminal. Additional ATRx10 primary terminals and ATRx20 secondary terminals are available through your local dealer or from Acroprint.
- Employees may clock in and out at any terminal – even use one terminal to clock in and a *different* terminal to clock out!
- Each ATRx10 primary terminal must be connected to a PC running Attendance Rx software (Single-PC or Network Client). The cable run may be up to 50 feet from PC to terminal. A 50-foot cable and connector is included with each ATRx10 terminal.
- Each ATRx20 secondary terminal can be connected to either an ATRx10 primary terminal or to another ATRx20 secondary terminal. There must be an ATRx10 terminal connected directly to a PC at the start of each terminal "chain."

- Cable length between the ATRx10 terminal and an ATRx20 terminal, or between two ATRx20 terminals, can be up to 1,000 feet. Acroprint RS485 plenum communications cable is required to connect ATRx20 terminals to your ProxTime system (cable sold separately). This cable is available from your local dealer or from Acroprint in runs of 100, 500, and 1,000 feet.
- By connecting an ATRx10 primary terminal to a networked PC running Attendance Rx Network Client software, you can position terminals anywhere in your facility that you desire, even more than 1,000 feet apart. While the ATRx10 terminal must be within 50 feet of the PC, the distance between the server and the client PC is limited only by your Local Area Network configuration and capacity.

These samples are intended to give you an idea of the general types of configurations that may be possible. If you have questions or would like further information for your specific situation, contact your local dealer or the Acroprint Systems Sales department at 800-334-7190.